



## PICO-NYMPH-IMX6 Quickstart Guide

### 1 Safety Precautions

Thank you for purchasing a TechNexion PICO series pre-assembled evaluation kit based on NXP i.MX6 applications processor. This installation guide will be helpful in the installation, wiring and inspection of your TechNexion evaluation kit. Before using the product, please read this guide to ensure correct use. You should thoroughly understand all safety precautions before proceeding with the installation, wiring, and operation. Place this instruction sheet in a safe location for future reference.

#### 1.1 Storage and Installation

- Keep the device dry. Precipitation, humidity, and all types of liquids or moisture can contain minerals that will corrode electronic circuits. If your device does get wet, allow it to dry completely.
- Do not use or store the device in dusty or dirty areas. Its parts and electronic components can be damaged.
- Do not store the device in hot areas. High temperatures can shorten the life of electronic devices, damage batteries, and warp or melt certain plastics.
- Do not store the device in cold areas. When the device returns to its normal temperature, moisture can form inside the device and damage electronic circuit boards.
- Do not attempt to open the device. This product needs to be installed by qualified personnel.
- Do not drop, knock, or shake the device. Rough handling can break internal circuit boards and fine mechanics.
- Do not paint the device. Paint can clog the parts and prevent proper operation.
- Unauthorized modifications or attachments could damage the device and may violate regulations governing radio devices.

#### 1.2 Wiring

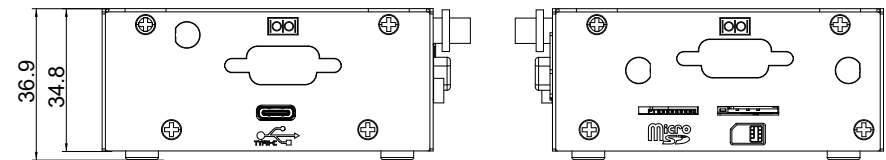
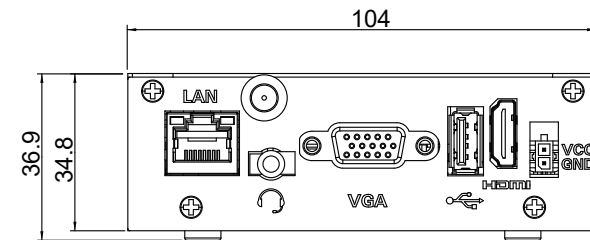
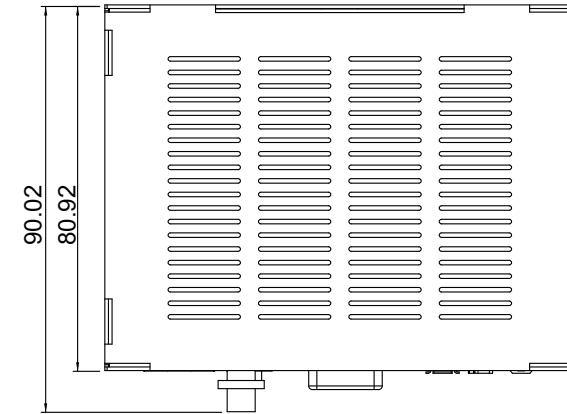
- Make sure that the available power source matches the required input power of the device. Failure to observe this caution may result in electric shock or fire.

#### 1.3 Maintenance and Inspection

- Do not touch any internal or exposed parts of the device as electrical shock may result.
- Do not open the device while power is on. Otherwise electrical shock may result.
- Do not use harsh chemicals, cleaning solvents, or strong detergents to clean the device.
- Be sure the ventilation holes are not obstructed during operation. Otherwise malfunction may result due to bad ventilation or overheating.

These suggestions apply equally to your device, battery, charger, or any enhancement. If any device is not working properly, take it to the nearest authorized service facility for service.

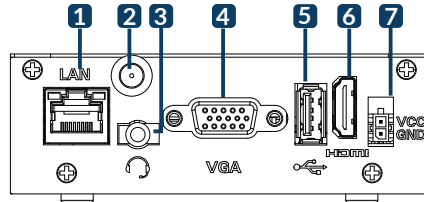
### 2 Dimensions



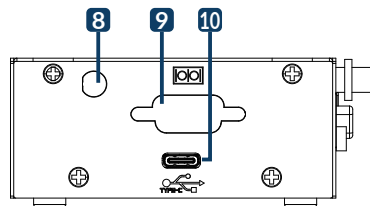
Unit : mm

### 3 External Connectors

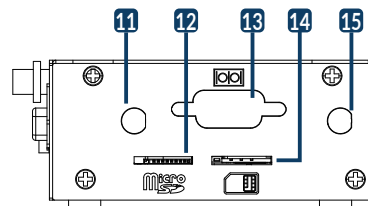
Top side view:



Left side view:



Right side view:



No.	Description	No.	Description
1	LAN RJ45 connector	9	Optional connector hole
2	Antenna connector	10	USB OTG (Type-C) connector
3	CTIA compliant 3.5mm audio jack	11	Antenna hole
4	VGA (15-pin D-SUB) connector	12	MicroSD cardslot
5	USB Host connector	13	Optional connector hole
6	HDMI connector	14	Micro-SIM cardslot
7	Power Input connector	15	Antenna hole
8	Antenna hole		

### 4 Installation Instructions

This installation guide will help you to assemble your development kit using step-by-step instructions to make sure all parts (development board and Wi-Fi antenna) are working.

Tips: Do not power your board during the installation process

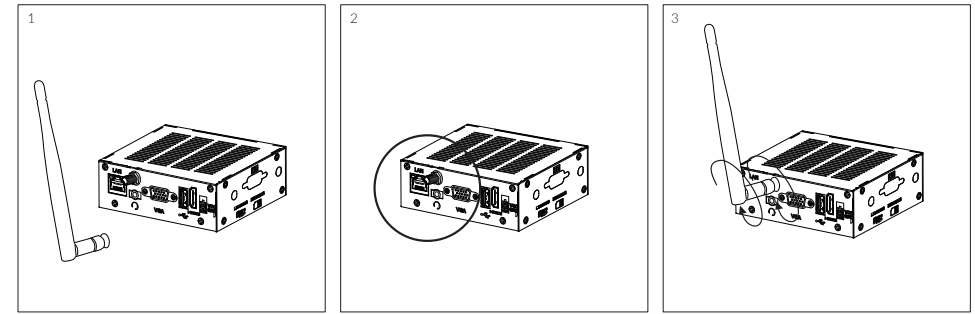
#### 4.1 Wi-Fi antenna

Please follow the steps below to properly install the Wi-Fi antenna.

Step 1: Prepare Wi-Fi antenna and development board.

Step 2: Locate the round Wi-Fi antenna connector on the development board.

Step 3: Screw the base of the Wi-Fi antenna into the antenna connector.



### 5 Software Installation

The unit is preloaded with software that can download and install a selection of OS images over hardwired network. Simply connect a display to the unit through the VGA or HDMI connector and a network through the Ethernet LAN RJ45 connector and power it up, then follow the steps on the screen to load the software. Local proxies will interfere with this process. For more information, go to our Knowledge Base at: <https://www.technexion.com/support/knowledge-base/>

- All Rights Reserved. No part of this document may be photocopied, reproduced, stored in a retrieval system, or transmitted, in any form or by any means whether, electronic, mechanical, or otherwise without the prior written permission of TechNexion Ltd.
- No warranty of accuracy is given concerning the contents of the information contained in this publication. To the extent permitted by law no liability (including liability to any person by reason of negligence) will be accepted by TechNexion Ltd., its subsidiaries or employees for any direct or indirect loss or damage caused by omissions from or inaccuracies in this document.
- TechNexion Ltd. reserves the right to change details in this publication without notice. Please download the most updated version at: <https://www.technexion.com/support/download-center/>